



Dayville School District

2025-27 Integrated Guidance Application Presentation

Contents

- Purpose of Presentation
- Background & Context
- Planning Team
- Plan Inputs
- Plan Overview
- What's Next

Purpose for Presentation

- To share what was prioritized in the plan given the range of inputs
- To explain how the plan was developed
- To hear additional feedback on the plan now that it has been developed
- To present, open for comment, and seek board approval



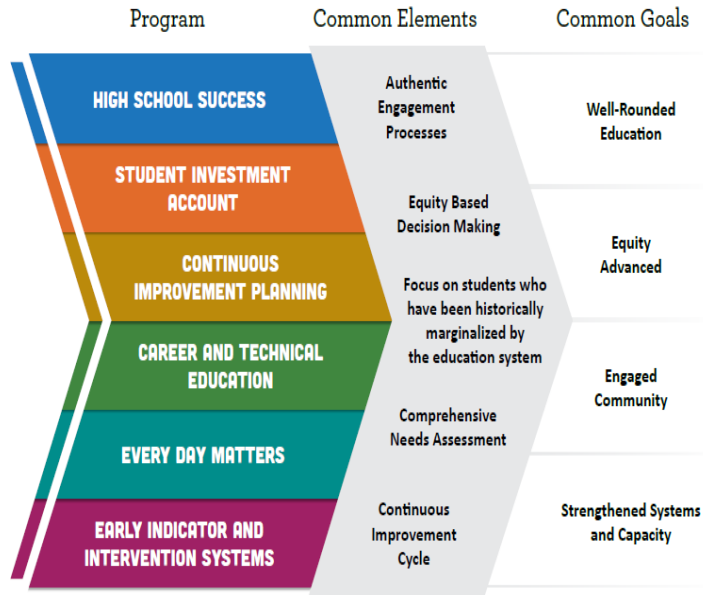
Background



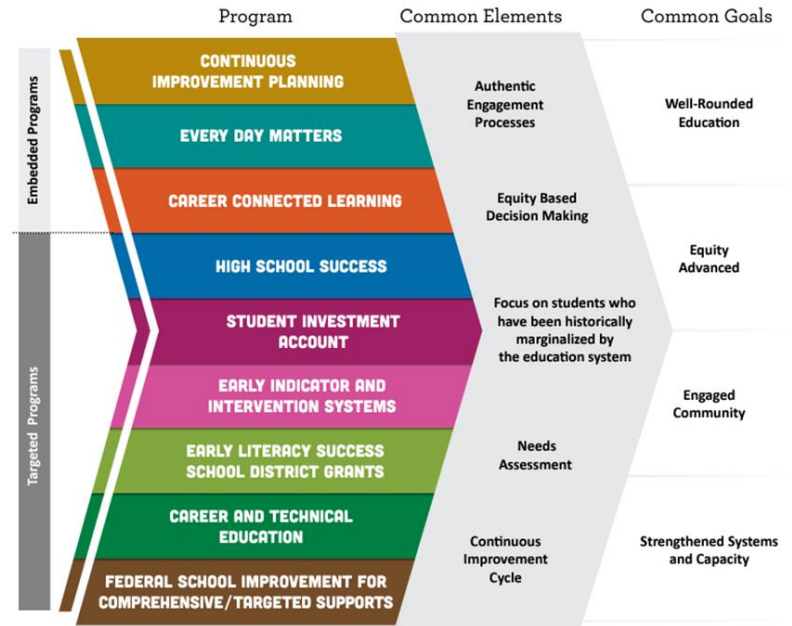
- Integration effort was responsive to requests from educational leaders and state legislators
- Combined processes for community engagement, needs assessment, planning, budgeting and evaluation for 6 programs
- Designed to reduce burden and redundancies and improve the framework by which progress can be measured over time

Programs & Common Goals

2023/25 Biennium



2025/27 Biennium



Summary of Program Purposes

High School Success (HSS) - Systems to improve graduation rates and college/career readiness.

Student Investment Account (SIA) - To meet students' mental health, behavioral needs and increase academic achievement/reduce disparities for student focal groups.

Early Literacy Success School District Grants (ELGSSG) - Grants to school districts in order to Increase early literacy for children from birth to third grade, reduce literacy academic disparities for student groups that have historically experienced academic disparities, increase support to parents and guardians around literacy, and to increase access to early literacy learning through support that is research-aligned, culturally responsive, student-centered and family-centered.

Early Indicator and Intervention System (EIS) - The development of a data collection and analysis system, in which educators collaborate, to identify supports for students.

Community Engagement Highlights

- Interviewed students, staff, community, specific focal groups
- Common statements from all three groups
- Fairly easy suggestions to respond to
 - Opportunities
 - Quality of Food
 - As much in-person classes as possible
- Update Technology for students

Needs Assessment Highlights

- Needs:
 - Vocational Classes needed
 - Opportunities for students (Field Trips, Electives, etc.)
 - PD Opportunities

[Link to application responses](#)

Our Plan

These priorities emerged:

- Continue what we've started in previous biennium
 - In-house Special Education Teacher
 - Mental Health Support with School Counselor
 - Curriculum Updates
 - Technology Updates
- Enhance Well-Rounded Education
 - Artist in Residence
 - Field Trips
- Work on Food Quality (Will Address in a separate funding source)

Our Plan

Our intended outcomes are:

- Reduce the disparities of achievement for our students served by IDEA & demonstrate proficiency in meeting state benchmarks for all students
- Students who experience better mental and social health will increase academic attainment
- Create a well-rounded education for students that enhances class options and opportunities, and after-school opportunities, resulting in students graduating with at least one career/secondary training goal to achieve
- A system and culture is established where the school is the nucleus of the community and fosters ongoing community engagement, and develops a strong positive culture with the school and community
- Students who attend school regularly will improve academically and socially

Our Plan

These key strategies will help us achieve our intended outcomes:

- Create supports to administer specially designed instructions by specialists for students served by IDEA
- Establish and maintain intervention supports
- Develop and implement Social Emotional Learning
- Invest in new curriculum, supports, opportunities, and class electives to enhance classes, and create new options for students
- Invest in professional development opportunities for staff to create high quality educators
- Provide for school and community events with a safe and equipped location to provide educational and social events.
- Communication & operations are strong with stipends for technology coordinator, community outreach coordinator & testing specialist
- Reduce chronic absenteeism

[Link to All Strategies & Outcomes](#)

Our Plan

Key Investments:

- Special Education Teacher
- Part-Time Counselor
- Well-Rounded Education Opportunities
- Technology Updates
- Professional Development for Staff
- Curriculum Adoption
- Reading Specialists for Early Literacy

[Link to Integrated Planning and Budget Template on our Website](#)

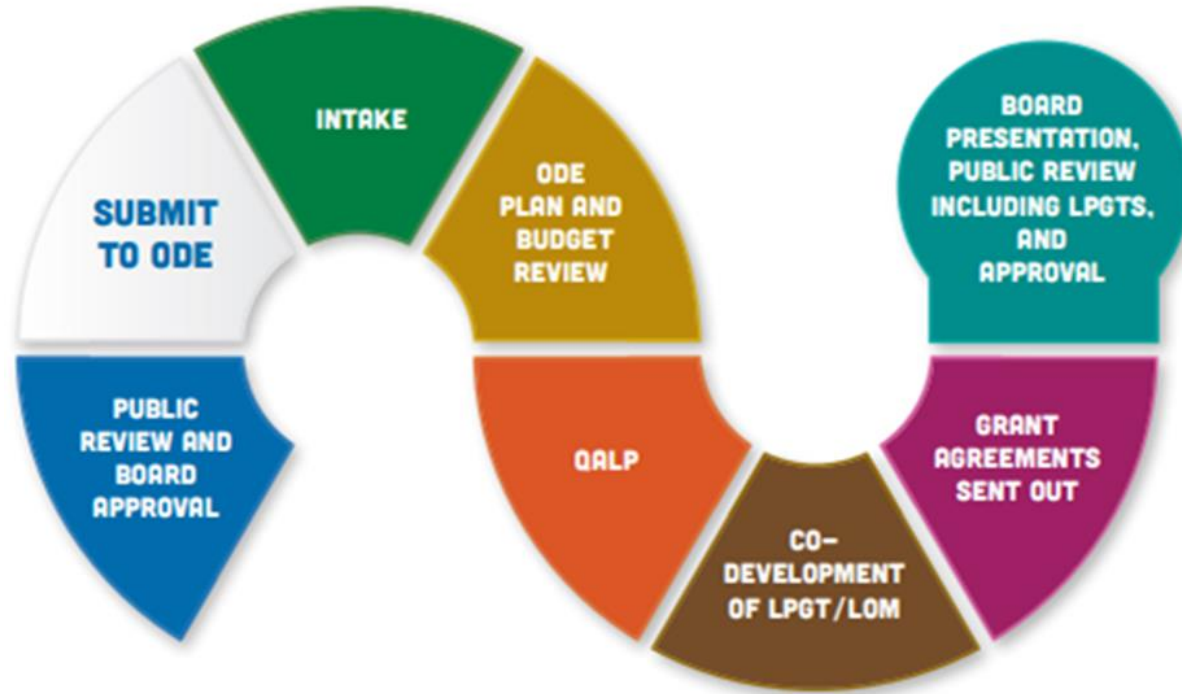
Our Plan - Tiered Approach

Tiers of Planning & Budgeting allow for nimble course changes that have been pre-considered but aren't within the current budget parameters.

In our district, these additional strategies and activities are possible if we move to another tier in our plan:

- Expand School sports activities to allow sports co-op expansion if desired

What Happens Next?



Questions & Comments

[Link to comment on plan](#)